



Size

2" - 40"

End Connections

150# Lug

Port Types

Standard
V-Port
Deflector Cone

Body & Trim Materials

304 Stainless Steel
316 Stainless Steel
Cast Iron

Seat Materials

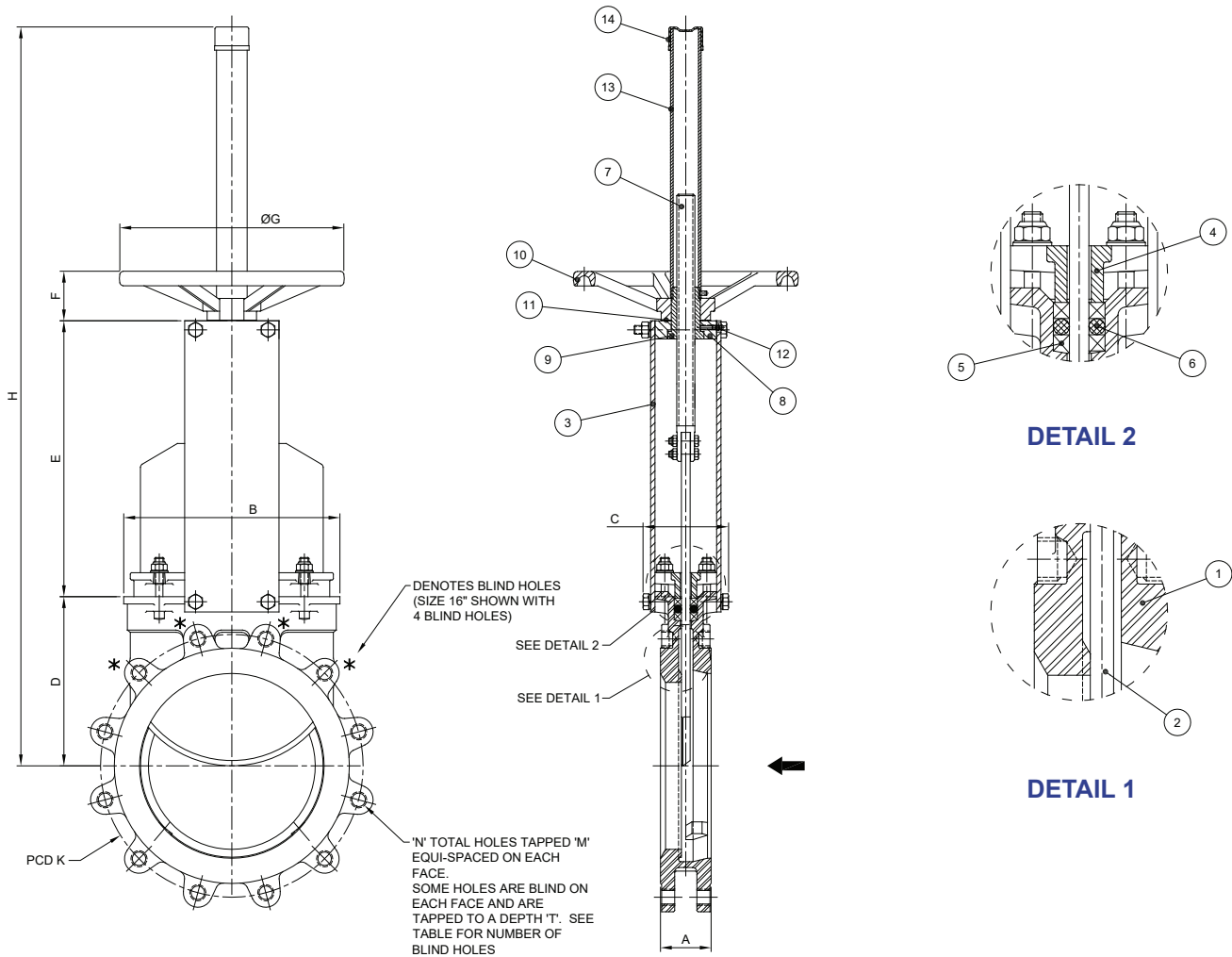
Metal
Buna
EPDM
Hypalon
Neoprene
Viton

Service Applications

Chemical
Food & Beverage
Mining
Power Plants
Pulp & Paper
Waste Water

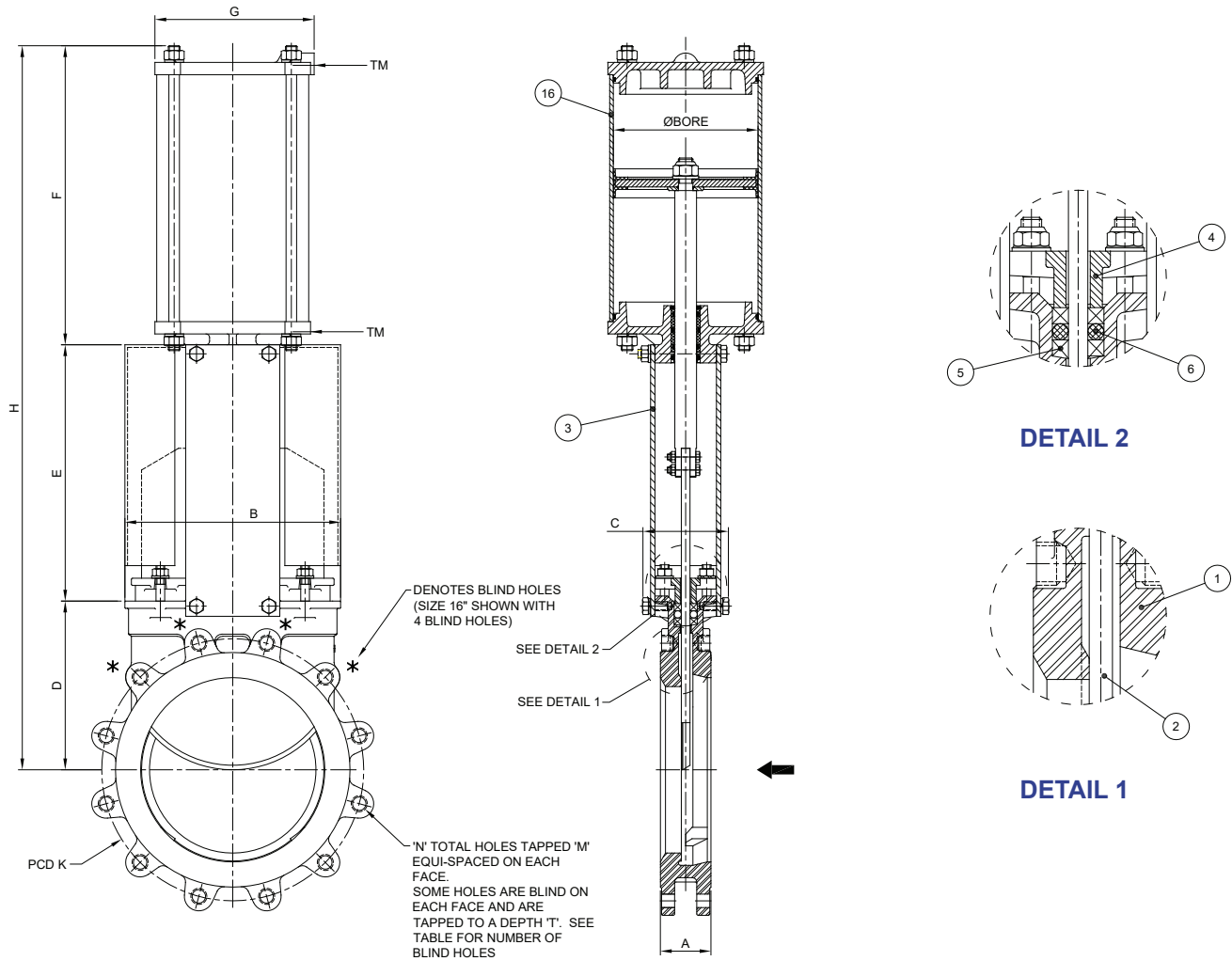
Applicable Standards

MSS-SP-81
TAPPI TIS 405-8



6100 SERIES MANUALLY OPERATED TAPPI EXAMPLE

SIZE	A (in.)	B (in.)	C (in.)	D (in.)	E (in.)	F (in.)	G (in.)	H (in.)	K (in.)	M	N	T (in.)	No. OF BLIND HOLES	WEIGHT (lbs)
2"	1.9	4.9	3.5	3.9	5.6	1.9	7.9	17.2	4.75	5/8 UNC	4	0.31	2	17
3"	2.0	5.9	3.5	4.7	6.6	1.9	7.9	18.7	6.00	5/8 UNC	4	0.34	2	22
4"	2.0	6.7	3.5	5.5	7.6	1.9	7.9	20.5	7.50	5/8 UNC	8	0.34	2	27
5"	2.3	6.7	4.1	5.9	8.5	2.0	9.8	23.9	8.50	3/4 UNC	8	0.34	2	35
6"	2.3	7.7	4.1	6.5	9.6	2.0	9.8	25.5	9.50	3/4 UNC	8	0.47	2	44
8"	2.7	9.7	4.6	8.0	12.5	2.5	11.8	32.6	11.75	3/4 UNC	8	0.47	2	70
10"	2.7	11.7	4.6	9.2	13.9	2.5	11.8	39.1	14.25	7/8 UNC	12	0.47	4	103
12"	3.0	13.7	4.6	10.7	15.6	2.5	16.1	42.4	17.00	7/8 UNC	12	0.47	4	143
14"	3.0	15.5	7.6	12.3	18.3	2.7	16.1	50.3	18.75	1 UNC	12	0.59	4	209
16"	3.5	17.4	7.6	13.7	20.2	2.7	16.1	53.5	21.25	1 UNC	16	0.59	4	268
18"	3.5	19.0	7.8	15.0	21.7	2.7	21.7	59.4	22.75	1 1/8 UNC	16	0.59	6	352
20"	4.5	21.3	7.8	17.0	24.1	2.7	21.7	63.7	25.00	1 1/8 UNC	20	0.88	6	444
24"	4.5	25.1	7.8	19.7	27.4	2.7	21.7	74.1	29.50	1 1/4 UNC	20	0.88	6	638



6100 SERIES PNEUMATICALLY OPERATED TAPPI EXAMPLE

SIZE	A (in.)	B (in.)	C (in.)	D (in.)	E (in.)	F (in.)	G (in.)	H (in.)	K (in.)	M	N	T (in.)	No. OF BLIND HOLES	TM (NPT)	BORE (in.)	WEIGHT (lbs)
2"	1.9	4.9	3.5	3.9	5.6	6.7	3.7	16.1	4.75	5/8 UNC	4	0.31	2	1/4	4	22
3"	2.0	5.9	3.5	4.7	6.6	8.0	3.7	19.5	6.00	5/8 UNC	4	0.34	2	1/4	4	26
4"	2.0	6.7	3.5	5.5	7.6	8.8	4.5	21.9	7.50	5/8 UNC	8	0.34	2	1/4	4	33
5"	2.3	6.7	4.1	5.9	8.5	10.5	5.5	25.0	8.50	3/4 UNC	8	0.34	2	1/4	5	46
6"	2.3	7.7	4.1	6.5	9.6	11.5	5.5	27.6	9.50	3/4 UNC	8	0.47	2	1/4	5	59
8"	2.7	9.7	4.6	8.0	12.5	14.0	6.9	34.5	11.75	3/4 UNC	8	0.47	2	1/4	6	101
10"	2.7	11.7	4.6	9.2	13.9	16.3	8.7	39.4	14.25	7/8 UNC	12	0.47	4	3/8	7	154
12"	3.0	13.7	4.6	10.7	15.6	18.2	8.7	44.6	17.00	7/8 UNC	12	0.47	4	3/8	8	195
14"	3.0	15.5	7.6	12.3	18.3	21.3	10.9	51.9	18.75	1 UNC	12	0.59	4	3/8	10	297
16"	3.5	17.4	7.6	13.7	20.2	23.2	10.9	57.1	21.25	1 UNC	16	0.59	4	3/8	10	356
18"	3.5	19.0	7.8	15.0	21.7	26.0	15.0	62.8	22.75	1 1/8 UNC	16	0.59	6	1/2	10	466
20"	4.5	21.3	7.8	17.0	24.1	28.0	15.0	69.0	25.00	1 1/8 UNC	20	0.88	6	1/2	12	638
24"	4.5	25.1	7.8	19.7	27.4	31.9	15.0	79.1	29.50	1 1/4 UNC	20	0.88	6	1/2	12	825